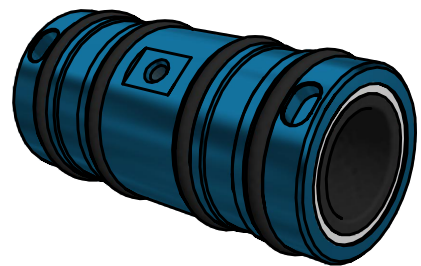
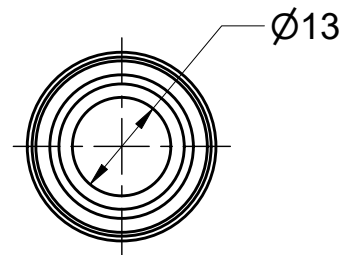
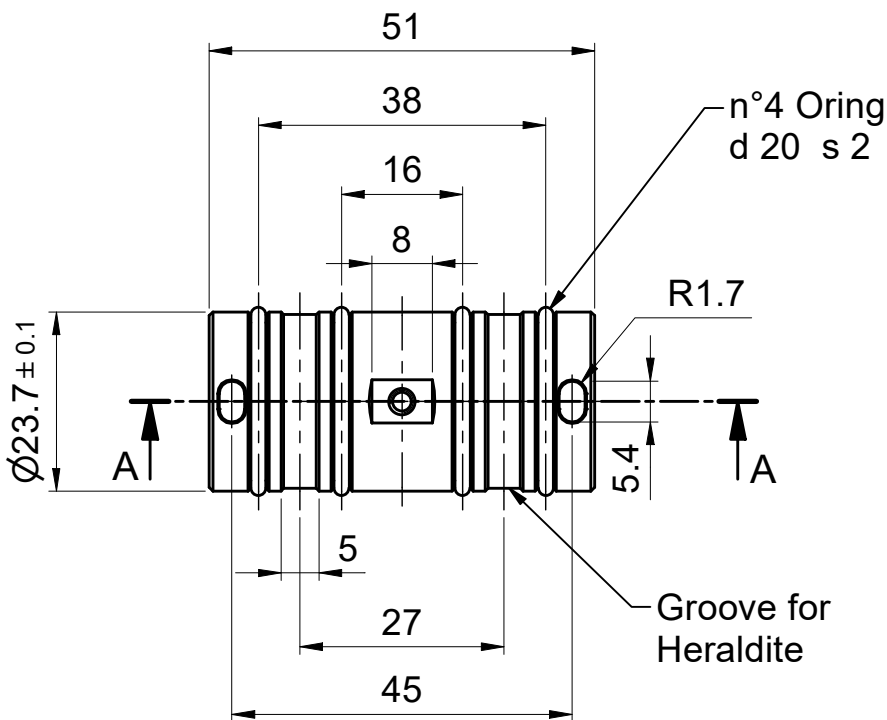
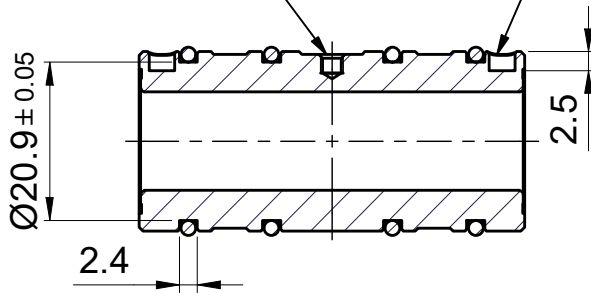


A-A ( 1 : 1 )

Air inlet  
M3x0.5  $\nabla$ 2.5

n°2 Groove for  
position on support



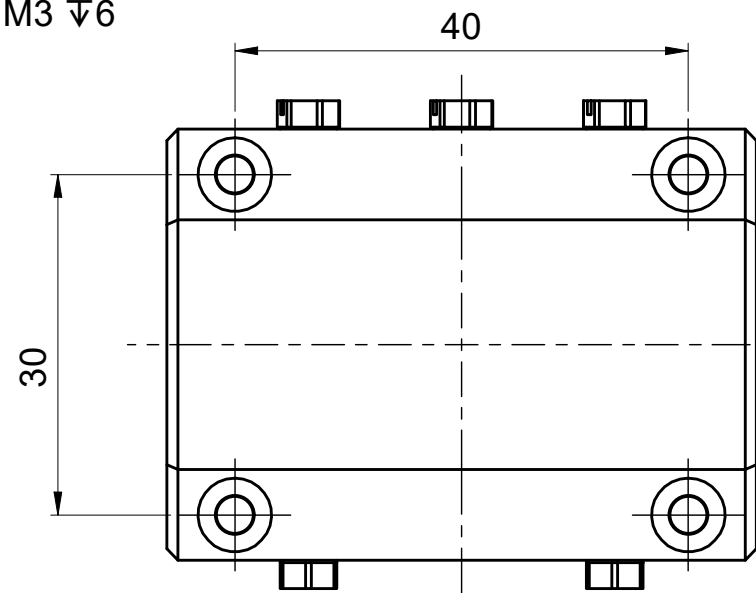
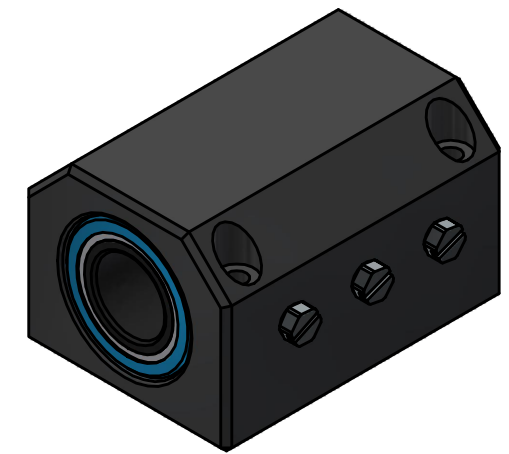
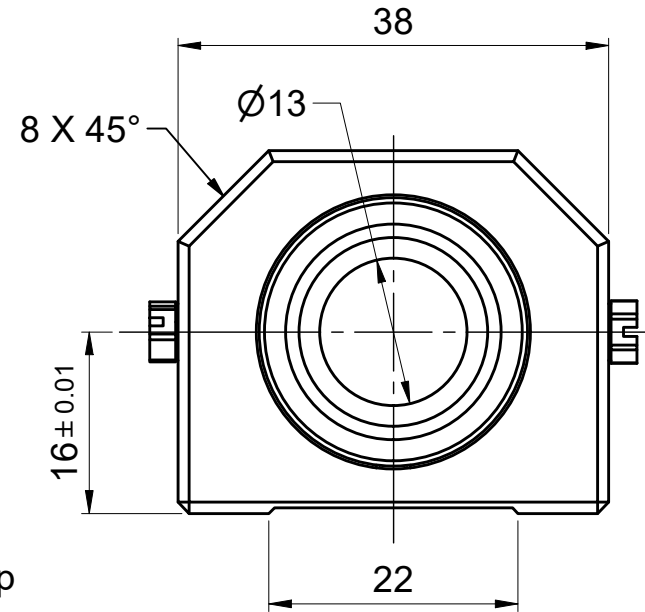
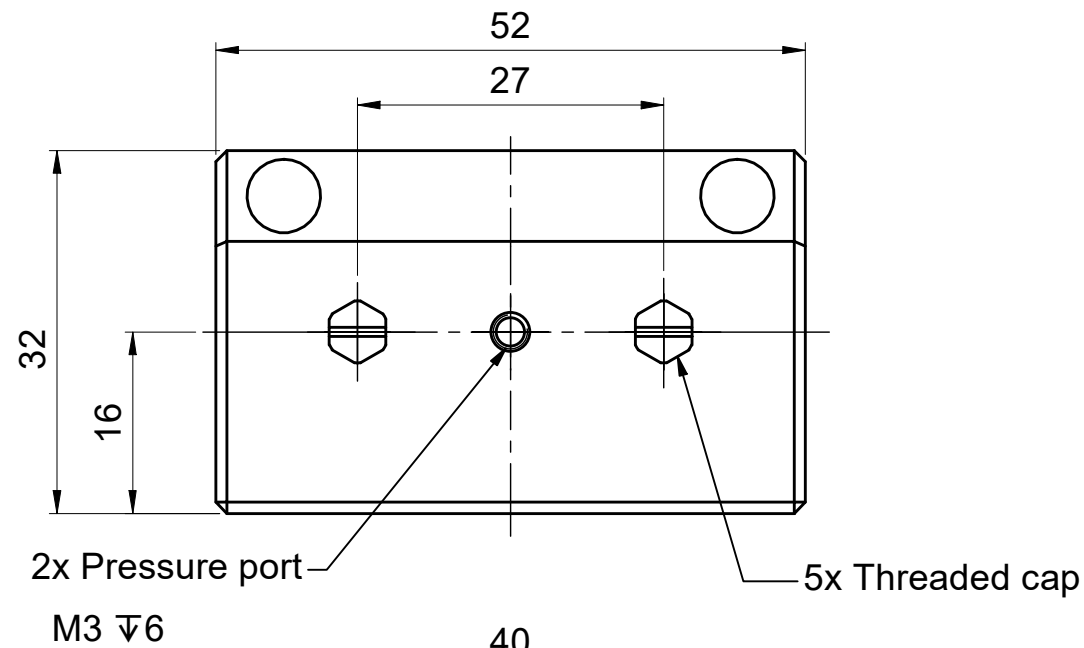
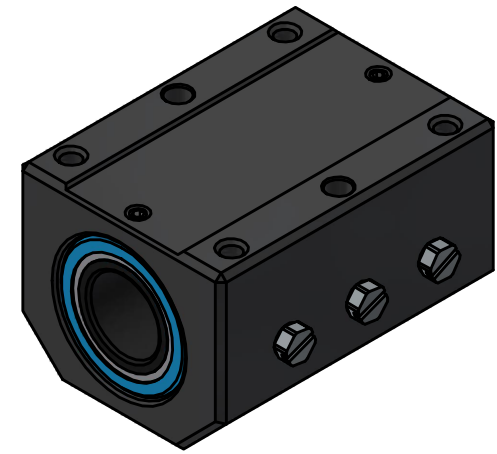
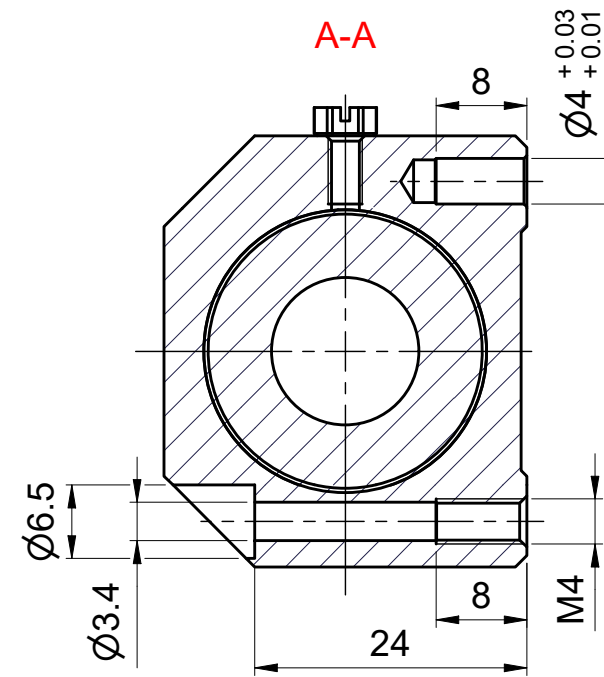
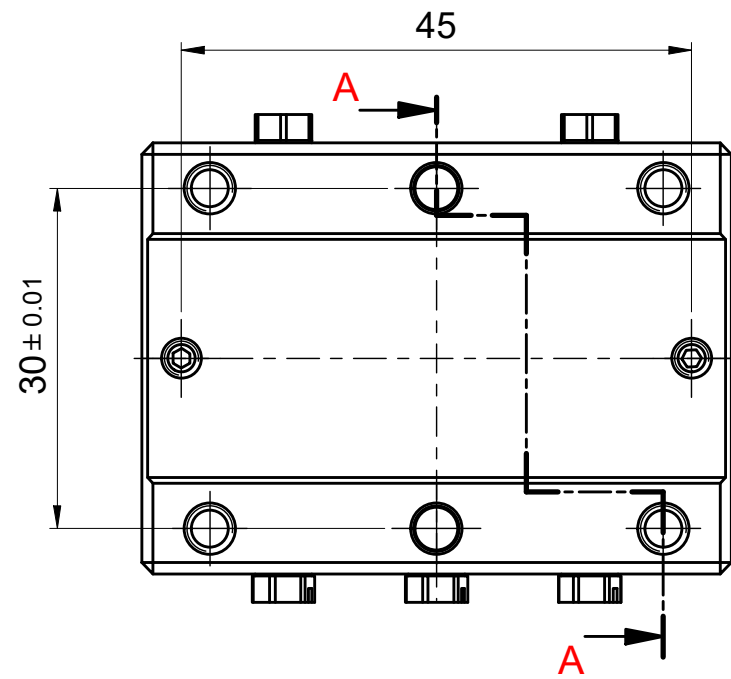
Recommended shaft tolerances ISO g6  
Rugosity  $R_a$  0,8  $\mu$ m

Recommended Mounting

Bore Diameter  $\varnothing$ 24.2mm  $\pm$  0.05

GENERAL TOLERANCES - FOR FEATURES WITHOUT SPECIFIC TOLLERANCE INDICATION ACCORDING TO ISO 2768 - mH					
GENERAL TOLERANCES FOR THREADS ISO 965-1 GAS ISO 228/1					
	XABR-013-RBB				RELEASE DATE
					10/02/2021
CODE	RELEASE	MEAS.UNIT	MASS	SCALE	
WF10500013000	A	mm	0,043 kg	1 : 1	

This drawing contains information which are property of Mager srl.  
Any total or partial reproduction, disclosure, copy or use of this drawing or the information contained herein is expressly prohibited without prior written permission from Mager srl.  
MAGER reserves also the right to change or update his products at its sole discretion at any time and without further notice.



**Note:**  
 Instructions of use of the following air bushing version,  
 RFF: floating version; RFI: stiffened floating version;  
 RFR: resin stiffened version are in a separate document.

GENERAL TOLERANCES - FOR FEATURES WITHOUT SPECIFIC TOLLERANCE INDICATION ACCORDING TO ISO 2768 - mH					
GENERAL TOLERANCES FOR THREADS ISO 965-1 GAS ISO 228/1					
	XABR-013-RFx				RELEASE DATE
					05/05/2022
CODE	RELEASE	MEAS. UNIT	MASS	SCALE	
WF10500013100	A	mm	0,132 kg	1.5 : 1	

This drawing contains information which are property of Mager srl.  
 Any total or partial reproduction, disclosure, copy or use of this drawing or the information contained herein is expressly prohibited without prior written permission from Mager srl.  
 MAGER reserves also the right to change or update his products at its sole discretion at any time and without further notice.